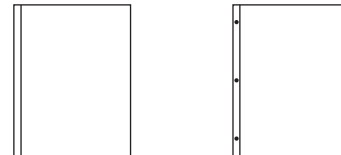


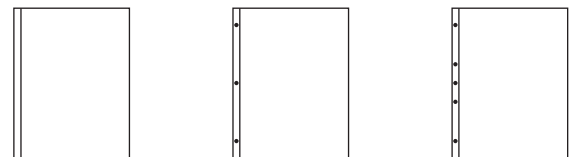
# REINFORCED MULTIPURPOSE PAPER PRODUCT LIST

## STOCK

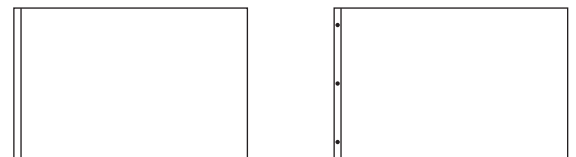
| 24# SIDE REINFORCED |          |       |
|---------------------|----------|-------|
| Item                | Size     | Holes |
| 7590                | 11 x 8.5 | None  |
| 7593                | 11 x 8.5 | 3     |



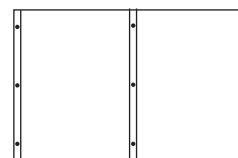
| 20# SIDE REINFORCED |          |       |
|---------------------|----------|-------|
| Item                | Size     | Holes |
| 7500                | 11 x 8.5 | None  |
| 7503                | 11 x 8.5 | 3     |
| 7505                | 11 x 8.5 | 5     |



| 24# 11 X 17 SIDE REINFORCED |         |       |
|-----------------------------|---------|-------|
| Item                        | Size    | Holes |
| 7530                        | 11 x 17 | None  |
| 7533                        | 11 x 17 | 3     |
| 7546                        | 11 x 17 | 6     |



**Bold : Binding Edge**



| PACKAGING        |                        |                  | WEIGHTS       |          |
|------------------|------------------------|------------------|---------------|----------|
| Paper Weight     | Sheets / Carton        | Cartons / Pallet | Carton Weight | M Weight |
| 20# Multipurpose | 11 x 8.5 : 2500 Sheets | 80 Cartons       | 27 lb         | 10 lb    |
| 24# Multipurpose | 11 x 8.5 : 2500 Sheets | 64 Cartons       | 32 lb         | 12 lb    |
| 24# Multipurpose | 11 x 17 : 2000 Sheets  | 40 Cartons       | 50 lb         | 24 lb    |

For more information, contact your DocuCopy® Distributor.

Product list effective 01/01/2021 © 2013-2021 DocuCopy®. All rights reserved. 11/21 JK | P41220



# REINFORCED MULTIPURPOSE PAPER PRODUCT LIST

## MAKE TO ORDER

| 24# SIDE REINFORCED |          |       |
|---------------------|----------|-------|
| Item                | Size     | Holes |
| 7595                | 11 x 8.5 | 5     |

| 24# SIDE REINFORCED - 100 SHEETS/PACK, 25 PACKS/CARTON |          |       |
|--|----------|-------|
| Item   | Size     | Holes |
| 7594   | 11 x 8.5 | 3     |

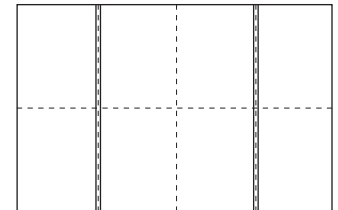
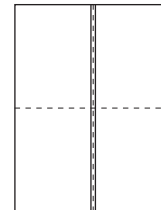
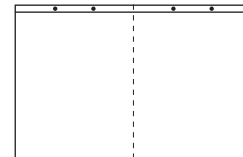
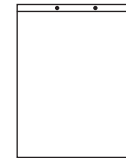
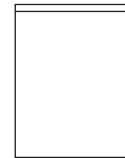
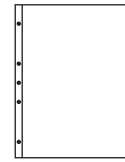
| 24# TOP REINFORCED |          |       |
|--------------------|----------|-------|
| Item               | Size     | Holes |
| 7580               | 8.5 x 11 | None  |
| 7582               | 8.5 x 11 | 2     |

| 24# 11 X 17 TOP REINFORCED |         |       |
|----------------------------|---------|-------|
| Item                       | Size    | Holes |
| 7544                       | 17 x 11 | 4     |

| 24# REINFORCED 4 UP FOLIO |             |       |
|---------------------------|-------------|-------|
| Item                      | Size        | Holes |
| 66140                     | 22.5 x 17.5 | None  |

| 24# REINFORCED 8 UP FOLIO |         |       |
|---------------------------|---------|-------|
| Item                      | Size    | Holes |
| 66180                     | 23 x 35 | None  |

**Bold : Binding Edge**



Yields 4 : 11" x 8.5"

Yields 8 : 11" x 8.5"

| PACKAGING        |                         |                  | WEIGHTS       |          |
|------------------|-------------------------|------------------|---------------|----------|
| Paper Weight     | Sheets / Carton         | Cartons / Pallet | Carton Weight | M Weight |
| 24# Multipurpose | 11 x 8.5 : 2500 Sheets  | 64 Cartons       | 32 lb         | 12 lb    |
| 24# Multipurpose | 11 x 17 : 2000 Sheets   | 40 Cartons       | 50 lb         | 24 lb    |
| 24# Multipurpose | 22.5 x 17.5 : 1000 Shts | 40 Cartons       | 50 lb         | 51 lb    |
| 24# Multipurpose | 23 x 35 : 1000 Sheets   | 20 Cartons       | 103 lb        | 103 lb   |

Minimum orders apply.

Contact your DocuCopy® Distributor for custom papers, formats, and additional information.